

Denton Record-Chronicle All-Area Softball Team 2009

FIRST TEAM

Pitcher: Tara Tague, Ryan, Jr.

Tague made an impact both offensively and defensively to help lead Ryan to a share of the district title. In the circle, she went 14-6 with a 2.08 ERA and 119 strikeouts. At the plate, she batted .360 with 17 runs and 22 RBIs. She also made 5-4A's all-district first team.



Pitcher: Ashley Anderson, Ponder, Jr.

Anderson went 15-3 in the circle for the Lady Lions this season and struck out 235 batters. The junior was Ponder's ace and helped take the team to the postseason. She only allowed 16 earned runs all season on her way to a 0.98 ERA. Anderson was also named District 10-2A's Defensive Player of the Year.



Catcher: Amanda Nelson, Aubrey, Jr.

For the third consecutive year Nelson has been the backstop for the Lady Chaps. Nelson helped lead Aubrey to the postseason again. She was named to District 10-2A's first team after having another good year at the plate. She hit .398 with 11 doubles, one triple and one home run. She also led Aubrey with 34 RBIs.



Catcher: Taylor Sells, Lake Dallas, Sr.

Sells had a breakout year for the Lady Falcons. She led Lake Dallas in every offensive category to help her earn first-team honors in District 5-4A. The senior was one of the top hitters in the area with a .517 clip. She also showed some power with four home runs and 21 RBIs. Sells will play on a full scholarship with Angelina College next season.



Infielder: Misty Dooley, Ryan, Soph.

Dooley followed up her MVP freshman year with another strong campaign as Ryan's lead-off hitter. She batted .427 with 41 runs and 25 stolen bases. She was caught stealing just once on the year. The sophomore made first-team all-district in 5-4A while playing at the shortstop position. Last season she made the team as an outfielder.



Infielder: Micah Foutch, Ryan, Soph.

The sophomore showed she will be a force for years to come in 2009, batting .431 with a team-high 42 RBIs. She also led the team in hits with 47, and she had just two errors on the year as the Lady Raiders' first baseman. Last season she was the DRC's Newcomer of the Year.



Infielder: Kacey Henderson, Aubrey, Jr.

This is Henderson's second consecutive year to land on the all-area team. She led the area with a .551 batting average and had six doubles, five triples and 23 RBIs as the Lady Chaps' leadoff hitter. Her on-base percentage was .612 and she played outfield with just one error on the season. She earned first-team honors in District 10-2A.



Infielder: Krystal Johnson, Ryan, Sr.

Johnson ended her career with her best season as she proved to be Ryan's most powerful hitter. The senior batted .389 with a team-high .695 slugging percentage. She had 23 runs, 28 RBIs and six home runs en route to first-team all-district honors in District 5-4A.



Infielder: Lindsay Vochoska, Guyer, Jr.

Always a more than capable fielder at first base, Vochoska matched her talent in the field at the plate this season as a key part of Guyer's menacing batting order. The junior hit .398 on the season with five home runs and 36 RBIs, and she did a good part of her damage in district play, hitting .405 with three bombs and 20 RBIs.



Outfielder: Sara Quintanar, Ryan, Soph.

Quintanar gave the Lady Raiders yet another talented sophomore after transferring to Ryan from crosstown rival Denton. She was named District 5-4A's Utility Player of the Year after batting .405 with 25 runs and 19 RBIs in 2009. She had just three errors on the year.



Outfielder: Ashley Kowalewski, Liberty, Jr.

The junior outfielder earned a slew of honors after hitting .405 with a home run for the Lady Warriors, as she was named the TAPPS 1-4A co-Newcomer of the Year, first-team all-district and honorable mention all-state. She was third on the team in RBIs with eight and had an on-base percentage of .444.



Outfielder: Courtney Antle, Ponder, Jr.

Antle led the Lady Lions at the plate with a .396 batting average. The junior also earned first-team All-District 10-2A honors in a district full of outfield talent. This is Antle's second consecutive year to make the All-Area team. As a sophomore last season, Antle was a second-team selection.



Outfielder: Kelly Rench, Guyer, Sr.

As the youthful Wildcats' lone senior, Rench turned into a big-time contributor in the outfield and at the plate. The speedy slap hitter hit .455 on the season as she was a key cog in the bottom of the Wildcats' order throughout the season. In district play, Rench batted .486 and was near the team lead with a .571 on-base percentage.



Utility: Amber Gonzales, Guyer, Soph.

The quick-footed shortstop bounced back and forth between the top and bottom of the batting order, but wherever she was, she made a point to get on base. Gonzales hit .447 in district play with a .512 on-base percentage, upping her numbers significantly after a slow start to the season. She also committed just two errors in district play.

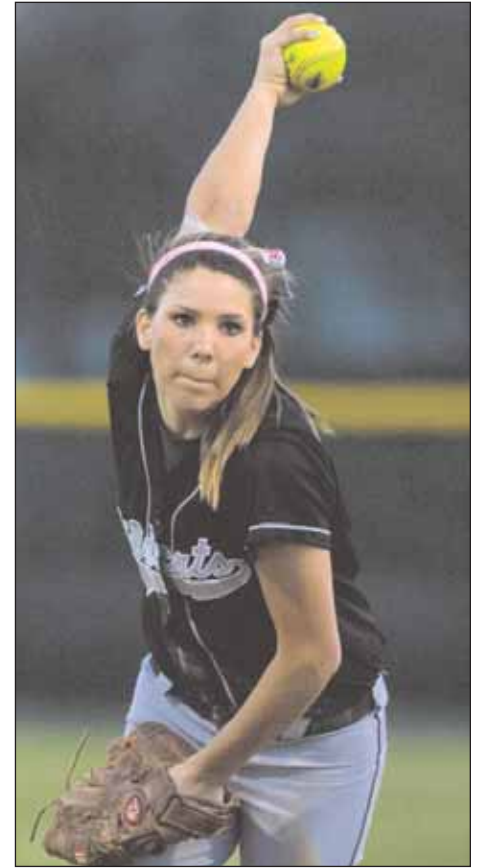


MOST VALUABLE PLAYER

← **Kylee Crosek** →

Guyer, P, Junior

Notable: Not many players can hit .426 in district play with an .830 slugging percentage and say the numbers weren't at the clip they displayed the previous season, but Crosek can. The Guyer junior didn't quite match her numbers from 2008, when she was also the All-Area MVP, but she still stood above the rest of the area this season with her bat and her pitching prowess. She was a serious threat offensively and in the circle, as she finished the season with four home runs and 29 RBIs to go with a .475 on-base percentage and 16 stolen bases from the lead off spot. And her pitching numbers were equally as impressive as she was the Wildcats' only pitcher. Crosek posted a 21-8 record in the circle and allowed opponents to hit at just a .190 clip. She finished the season with 158 strikeouts. She was even tougher in district play with a 13-1 record, a miniscule 0.86 ERA and an opponents' batting average of .152, earning her unanimous District 5-4A MVP honors.

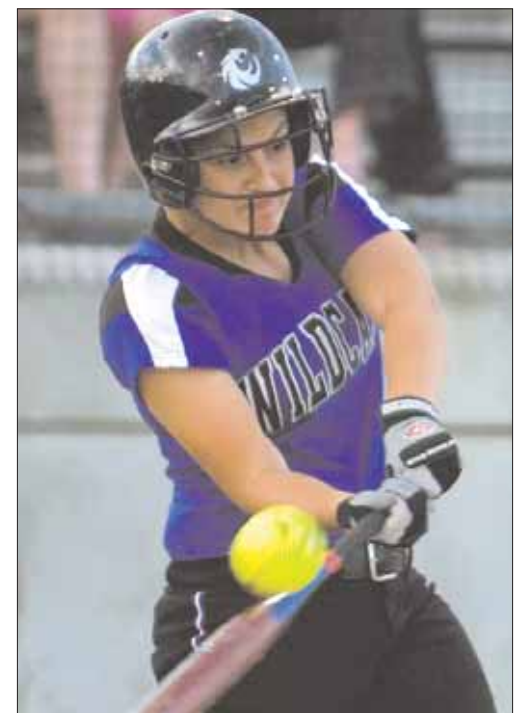


OFFENSIVE PLAYER OF THE YEAR

← **Layne Greenlee** →

Guyer, 3B, Sophomore

Notable: Everyone around Guyer's softball program knew they would get big things from Greenlee in 2009 after she was hampered by a serious knee injury during her freshman season. But no one expected the gaudy numbers the sophomore third baseman put up in 2009. Greenlee took District 5-4A by storm, earning Offensive Player of the Year honors with seven home runs and 50 RBIs on the season. In district play, she hit .550 with a .950 slugging percentage and was on base 60 percent of the time. She also stole 15 bases on the season.

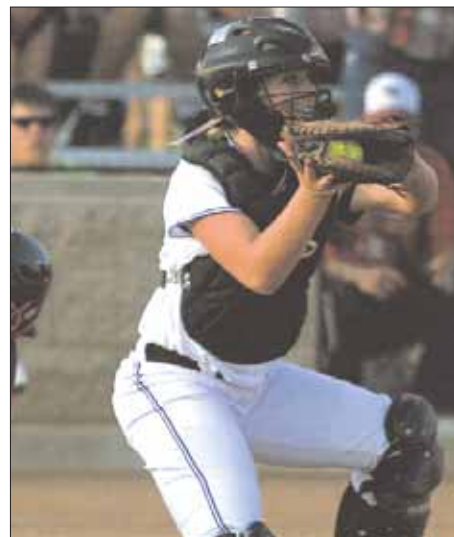


PITCHER OF THE YEAR

↑ **Kasey Carlock**

Aubrey, P, Senior

Notable: Carlock wins this honor by edging out a crop full of area talent in the circle in District's 5-4A, 9-3A and 10-2A. But check her stats. Carlock, a senior, led all area pitchers with 295 strikeouts and posted a remarkable 0.27 ERA to help lead Aubrey to the area round of the playoffs. She pitched almost every inning for the Lady Chaps this season. Carlock also showed off her skills at the plate by posting a .362 average with 10 doubles and one triple. For the third consecutive year Carlock also landed on District 10-2A's first team.



CO-DEFENSIVE PLAYER OF THE YEAR

← **Caitlin Christopher**

Guyer, C, Sophomore

Notable: Already a seasoned veteran as a sophomore, Christopher called the pitches for the Wildcats and was a great backstop for the District 5-4A co-champions. Christopher sported a .962 fielding percentage behind the plate with just one error on the entire season, and zero in district play. She had just two passed balls, none of which came in district play. She was also a pest for opposing base runners, as she threw out seven runners trying to steal bags. And she wasn't all defense, as she hit .393 with three home runs and 34 RBIs.

CO-DEFENSIVE PLAYER OF THE YEAR

← **Sonia Foutch**

Ryan, C, Senior

Notable: The heart and soul of the Lady Raiders finished her high school career with another stellar campaign, leading Ryan to its third straight District 5-4A title and another trip to the playoffs. She was named 5-4A's Defensive Player of the Year with outstanding play as the Lady Raider catcher. She finished the year with 249 putouts and just a single error on the year. Meanwhile, she made it impossible for runners to steal second base, regularly catching runners trying to steal, including in Ryan's playoff-series loss to Aledo. She was no slouch at the plate either. The senior hit .393 for the year with 25 RBIs and 29 runs.



SECOND TEAM

P — Victoria Archer, Liberty Christian, Sr.

P — Payton Vardell, Krum, Fr.

P — Maggie Jones, Sanger, Sr.

P — Josie Donelson, Sanger, Jr.

C — Kristen Kimmel, Ponder, Sr.

IF — Erin Leamon, Argyle, Sr.

IF — Aubrey Antle, Ponder, Soph.

IF — Charnie Guhr, Pilot Point, Sr.

IF — Keely Woods, Ponder, Sr.

OF — Mandi Marsden, Liberty Christian, Jr.

OF — Rachel Vasquez, Krum, Sr.

OF — Zoila Olguin, Ryan, Jr.

Util. — Amanda Wells, Guyer, Jr.

Util. — Morgan Stover, Ponder, Soph.

Util. — Meghan Eilers, Sanger, Fr.



UTILITY PLAYER OF THE YEAR

↑ **Taylor Petrick**

Argyle, C, Senior

Notable: After two years of first-team recognition, Petrick earned a superlative honor in 2009 after earning Offensive Player of the Year honors in District 9-3A. The senior catcher and first baseman shined for the Lady Eagles on both offense and defense. She hit .529 on the season with three home runs and 22 RBIs and 13 stolen bases. On defense, she was stellar, as she didn't commit an error all season long.

NEWCOMER OF THE YEAR

← **Samantha Betts**

Ryan, P, Junior

Notable: Coming into the year, Ryan knew it had one strong pitcher in Tara Tague. What the Lady Raiders found out over the course of the season was that they had two. Samantha Betts posted almost identical statistics to those of Tague despite not having the varsity experience. Betts went 11-5 with a 1.70 earned-run average with 105 strikeouts in her first crack at varsity play. Opponents batted just .195 against her as she earned second-team all-district honors in 5-4A. The junior showed how much she developed over the year in the playoffs. She held off a strong Aledo team in her first playoff start in Game 2 before the game was lost in extra innings after Betts was relieved.

